

Water Works and Lighting Commission Water Rate Summary

(effective 9/1/2024)

Monthly Service Charges based on meter size:

5/8 inch	\$8.99	3 inch	\$62.96
¾ inch	\$8.99	4 inch	\$97.81
1 inch	\$14.62	6 inch	\$175.39
1 ¼ inch	\$20.24	8 inch	\$268.70
1 ½ inch	\$24.73	10 inch	\$391.25
2 inch	\$38.23	12 inch	\$513.80

Residential Class – includes single-family homes, duplexes, and individually-metered condominiums, apartments, and mobile homes.

Plus Volume Charge: \$4.22 per unit – 100 cubic feet

Multifamily Residential – customers include master-metered multifamily dwelling units such as condominium complexes, apartment buildings, and mobile home parks.

Plus Volume Charge: \$4.05 per unit – 100 cubic feet

Nonresidential Class – includes commercial, industrial, and public authority customers. Commercial customers include business entities and institutions, except governmental entities, that provide goods or services.

Plus Volume Charge:

- First 333 units - \$3.89 per 100 cubic feet.
- Next 1,333 units - \$3.44 per 100 cubic feet.
- Over 1,666 units - \$3.22 per 100 cubic feet.

General Service Metered Irrigation – includes customers who have water service provided primarily for landscape irrigation.

Monthly Service Charges are 50% of the meter size above.

Plus Volume Charge: \$7.76 per unit – 100 cubic feet

Public Fire Protection

Meter Size	Residential	Nonresidential
5/8 inch	\$7.87	\$19.11
¾ inch	\$7.87	\$19.11
1 inch	\$20.24	\$49.47
1 ¼ inch	\$29.23	\$74.20
1 ½ inch	\$39.35	\$98.94
2 inch	\$62.96	\$159.65
3 inch	\$118.05	\$301.31
4 inch	\$196.75	\$499.18
6 inch	\$394.62	\$989.37
8 inch	\$630.72	\$1,580.74
10 inch	\$945.52	\$2,369.98
12 inch	\$1,261.44	\$3,159.23

Water Works and Lighting Payment Options

Automatic Bill Payment - Set up a recurring payment on your monthly due date from your checking or savings account. Sign up online at www.wlc.com, in our office, or call 715-423-6300 and we will mail you a form.

Pay Now (SmartHub) - You can make a one-time online payment. Visit our website at www.wlc.com/smarthub.coop/PayNow.

Online Payment (SmartHub) – Pay your bill using your bank account, credit, or debit card online on the date of your choice. Just go to our website to get started. You can also download the smarthub app for your android or iphone by going to Google Play or the App Store.

Phone Payment – You can now pay by phone with your debit or credit card. Call the toll free number 855-940-3788. You will need your Water Works and Lighting Commission account number.

WW&LC Office – Walk in to make a payment with cash, check, money order, or credit/debit card. Our office hours are 7:30 AM – 3:30 PM Monday-Friday.

Drop Boxes – A locked drop box is located outside our front door or you can use the drive up box located off Peach Street (no cash).

Pay Stations –

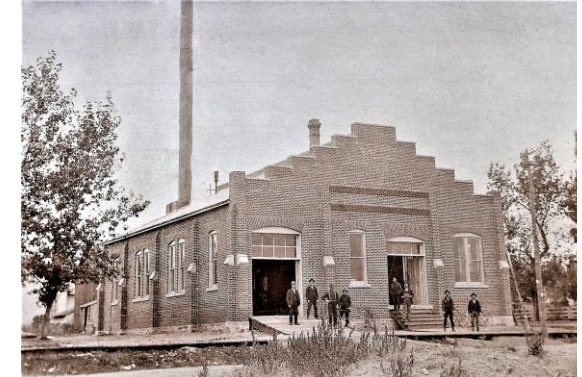
- City Treasurer's office (in City Hall). Office hours are Mon - Thurs 8:00 AM - 4:30 PM and Fri 8:00 AM – 12:00 PM.
- IGA Quality Foods – 1811 Baker St or 1021 W Grand Ave. Open everyday 6:00 AM - 10:00 PM

Mail – Send a check or money order (no cash) to our office. A return envelope is included with your bill.



Water Works & Lighting Commission
Celebrating over 100 Years of Service!!!

221 16th St. S., P.O. Box 399
Wisconsin Rapids, WI 54495-0399
715.423.6300 or FAX 715.422.9017
www.wlc.com



The electric and water utilities are entities with rates and operating rules regulated by the Public Service Commission of Wisconsin

NEW CUSTOMERS

To apply for service you can call our office, submit your request online through our website, or come to our office and apply.

Water Works and Lighting Commission
Electric Rate Summary
(effective 9/1/2023)

RESIDENTIAL SERVICE (Rg-1)

Customer Charge:	Single Phase	\$12.00 per month
	Three Phase	\$17.00 per month
Energy Charge:		\$0.1111 per kWh
Public Benefit Charge*		

RESIDENTIAL SERVICE – Optional Time of Day (Rg-2)

Customer Charge:	Single Phase	\$12.00 per month
	Three Phase	\$17.00 per month
Energy Charge:	On-Peak	\$0.1835 per kWh
	Off-Peak	\$0.0550 per kWh
Public Benefit Charge*		

GENERAL SERVICE (Gs-1)

Customer Charge:	Single Phase	\$12.50 per month
	Three Phase	\$17.00 per month
Energy Charge:		\$0.1288 per kWh
Public Benefit Charge*		

GENERAL SERVICE Optional Time-of-Day (Gs-2)

Customer Charge:	Single Phase	\$12.50 per month
	Three Phase	\$17.00 per month
Energy Charge:	On-Peak	\$0.2148 per kWh
	Off-Peak	\$0.0739 per kWh
Public Benefit Charge*		

SMALL POWER SERVICE (Cp-1)

Customer Charge:		\$34.00 per month
Energy Charge:		\$0.0837 per kWh
Demand Charge:		\$7.50 per kW
Distribution Demand Charge:		\$1.50 per kW
Public Benefit Charge:		\$10.00 per month

SMALL POWER SERVICE

Optional Time-of-Day (Cp-1 TOD)

Customer Charge:		\$34.00 per month
Energy Charge:	On-Peak	\$0.0857 per kWh
	Off-Peak	\$0.0672 per kWh
Demand Charge:		\$7.50 per kW
Distribution Demand Charge:		\$1.50 per kW
Public Benefit Charge:		\$10.00 per month

LARGE POWER SERVICE (Cp-2)

This rate class is closed to new customers

Customer Charge:		\$80.00 per month
Energy Charge:		\$0.0757 per kWh
Demand Charge:		\$8.00 per kW
Distribution Demand Charge:		\$1.75 per kW
Public Benefit Charge:		\$10.00 per month

LARGE POWER SERVICE (Cp-2 TOD)

Customer Charge:		\$80.00 per month
Energy Charge:	On-Peak	\$0.0818 per kWh
	Off-Peak	\$0.0637 per kWh
Demand Charge:		\$8.00 per kW
Distribution Demand Charge:		\$1.75 per kW
Public Benefit Charge:		\$10.00 per month

INDUSTRIAL POWER SERVICE Time-of-Day (Cp-3)

Customer Charge:		\$110.00 per month
Energy Charge:	On-Peak	\$0.0783 per kWh
	Off-Peak	\$0.0600 per kWh
Demand Charge:		\$8.50 per kW
Distribution Demand Charge:		\$2.00 per kW
Public Benefit Charge:		\$30.00 per month

LARGE INDUSTRIAL POWER SERVICE

Time-of-Day (Cp-4)

Customer Charge:		\$210.00 per month
Energy Charge:	On-Peak	\$0.0753 per kWh
	Off-Peak	\$0.0581 per kWh
Demand Charge:		\$9.00 per kW
Distribution Demand Charge:		\$2.25 per kW
Public Benefit Charge:		\$50.00 per month

Electric Rate Information

On-Peak Hours: Residential & General Service: 9am to 9pm, Monday through Friday, excluding holidays. Small, Large & Industrial Power: 8am to 9pm, Monday through Friday, excluding holidays.

Off-Peak Hours: All times not specified as On-Peak.

Time-of-Day: Once you have agreed with this rate, you must remain at this rate for a minimum of 12 months.

Customer Fixed Charge: A charge for electric service that covers a portion of the costs of electric meters, billing, and distribution system costs.

Power Cost Adjustment: All energy charges (per kWh) are subject to the Power Cost Adjustment (PCA) reflecting monthly charges in the cost of power generation and transmission.

***Commitment to Community Charge:** (Public Benefits Charge) State required funding of low incoming assistance and energy efficiency programs. The charge shall not exceed the greater of the monthly amount of \$1.75 or 3 percent of the electric bill.

Energy Charge: Charge for electric service based on the electric energy consumed.

Demand Charge: The peak rate at which electric energy is used for any period of 15 consecutive minutes.

Distribution Demand Charge: The highest monthly maximum measured demand occurring in the current month or proceeding 11-month period.

Late Penalty: A one-time charge of 3% but not less than \$.50 will be added to bills not paid within 20 days from date of issuance.